

An advertisement for Victoria + Albert featuring three custom-colored bathtubs in a traditional Japanese-style wooden building. The building has a stone floor and large windows with wooden frames. Outside, there is a rocky landscape with a pond and a pine tree. The bathtubs are green, pink, and blue, each with a gold faucet. A small white sink is also visible on the right.

victoria ⊕ albert®

CUSTOM COLOUR BATHS + BASINS



# A WORLD OF COLOUR

Personalisation has emerged as the most significant new trend in bathrooms. Leading this trend, our Victoria + Albert custom colour service allows you to personalise the exterior of our freestanding baths and basins to coordinate with the rest of the bathroom design.

Cover: Toulouse 1800 - RAL 6003 'Olive Green' Gloss, RAL 4009 'Pastel Violet', RAL 5007 'Brilliant Blue' Gloss. Barcelona 64 - RAL 7023 'Concrete Grey' Gloss.  
Left: Edge 45 - RAL 240 90 05 'Soft Blue White' Gloss. ios Baths - RAL 170 30 20 'Thistle Green' Gloss, RAL 250 20 25 - 'Dark Denim Blue' Gloss

## CUSTOM COLOUR

# Endless Possibilities

Victoria + Albert's colour finish is multi-layered for exceptional depth and lustre.

A special catalysed paint is applied, and the surface is hand-polished between applications.

This technique results in a beautiful and durable finish.

Choose from any colour in the spectrum, in either gloss or matte. We use premium PPG Vibrance Collection™ paints for an extraordinary quality finish, designed to withstand the rigours of bathroom life. Victoria + Albert offer colours from the RAL system, Pantone, and colour match hues from major paint manufacturers including Dulux, Taubmans, Wattyl, Porter's Paints and more.

Colour baths and basins are made to order, so please allow up to 6 weeks for delivery.

Victoria + Albert Baths define "gloss" at a 90% gloss level, and "matt" at a 20% gloss level.

ios Baths - RAL 095 90 59 'Dynamic Yellow' Gloss, RAL 080 70 20 'Yellow Brown' Gloss.  
Edge 45 - RAL 9005 'Jet Black' Gloss.



## Matte or Gloss

Our baths and basins are available in two standard finishes; Gloss and Matte. Both finishes are cast in our signature QUARRYCAST™ material, which is naturally white throughout. Either finish can be customised with Matte or Gloss paint on the exterior.

### Gloss (SW)

Our signature finish is glossy on the inside and outside. Hand polished to produce a beautifully smooth sheen, our gloss finish has been a market leader for over 25 years. Every bath and basin in our range is available in our Gloss finish.

### Matte (SM)

Victoria + Albert's Matte finish is different. Made in the cast, not by coatings or glaze, it is 100% Matte. It has a velvety feel, gentle against the skin. Our Matte finish is available across a selection of our baths and basins.

This Page: ios 54 - RAL 1007 'Daffodil Yellow' Matte.  
Right: Toulouse 1800 - RAL 5024 'Pastel Blue' Gloss,  
RAL 6016 'Turquoise Green' Matte,  
RAL 1006 'Maize Yellow' Gloss,  
RAL 1019 'Grey Beige' Gloss.  
Barcelona 64 - RAL 9005 'Jet Black' Matte.





OUR MATERIAL

# What is QUARRYCAST™?

Our specially developed QUARRYCAST™ material is the perfect blank canvas, made from a unique blend of Volcanic Limestone™ and high-performance resin.

Volcanic Limestone™ is Victoria + Albert's name for the very special white rock that is perfect for making baths and basins. It is formed when the elemental forces associated with liquid magma act upon surrounding soft, chalky limestone. The immense heat and pressure from the magma transforms the neighbouring rock into a new material made up of incredibly hard strands.

We blend milled Volcanic Limestone™ rock with high quality resins to bind these strands into a complex 3D matrix. The finished result is QUARRYCAST™ - a world class stone composite that delivers unrivalled strength, durability and beauty.



## Resistant

The naturally white, glossy surface is incredibly durable, and resistant to hair dyes and bath oils.



## Strong

QUARRYCAST™ is solid all the way through - more than twice as hard as acrylic with no creaking or flexing.



## Warm

QUARRYCAST™ is warm to the touch with high insulating properties, keeping your bath water warmer for longer.



## Easy to clean

The naturally glossy surface is easy to wipe clean.



## Lightweight

Surprisingly lightweight, the average weight of our baths is just 72kg.

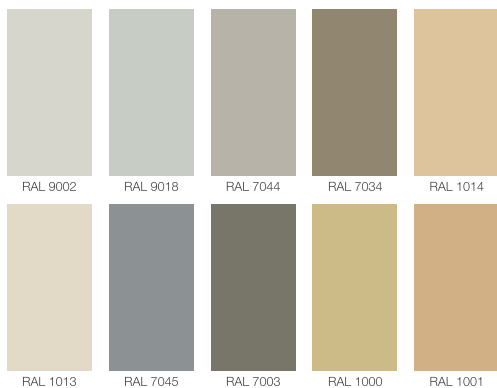


## Guaranteed

25 year consumer guarantee, 8 year commercial guarantee\*



Barcelona 55 - RAL 9018 'Papyrus White' Matte. Barcelona - RAL 1014 'Ivory' Matte

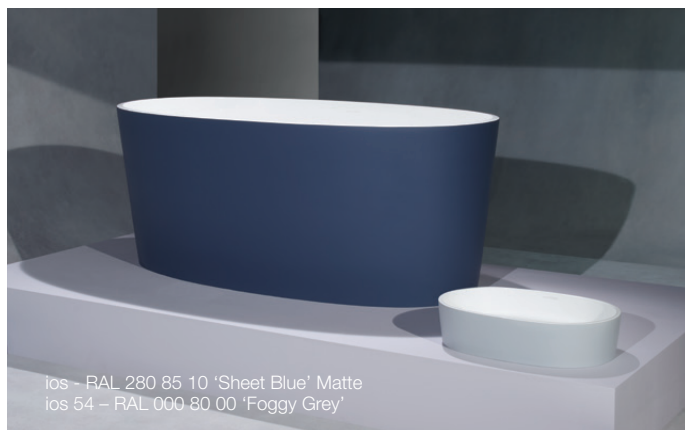
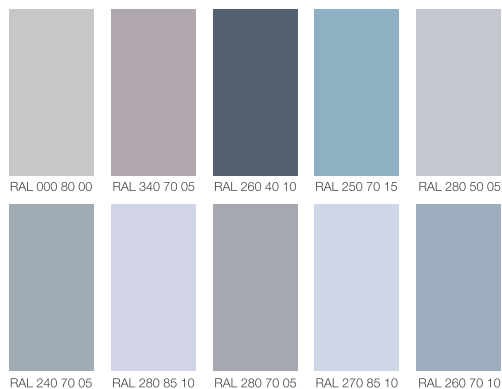






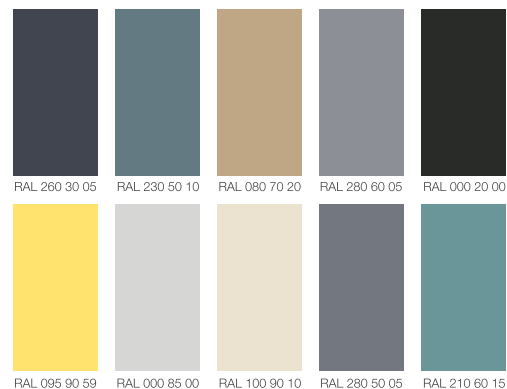


Edge 45 - RAL 260 40 10 'Sheet Blue' Gloss  
ios - RAL 240 90 05 'Soft Blue White' Gloss





Amalfi – RAL 095 90 59 'Dynamic Yellow' Gloss  
 Amalfi 55 – RAL 100 90 10 'Elderberry White' Matte



Amalfi 55 –  
 RAL 100 90 10 'Elderberry White' Matte  
 RAL 095 90 59 'Dynamic Yellow' Gloss  
 RAL 000 20 00 'Slate Black' Gloss

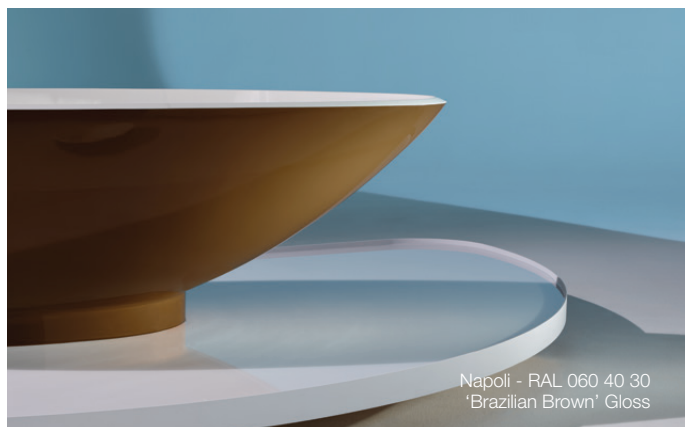
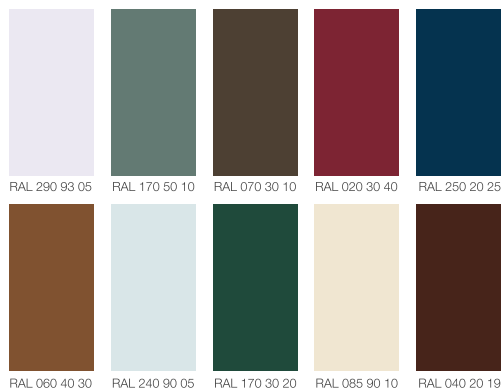


Amalfi – RAL 080 70 20 'Yellow Brown' Gloss  
Amalfi 55 – RAL 095 90 59 'Dynamic Yellow' Gloss, RAL 250 70 15 'Chalk Blue' Gloss



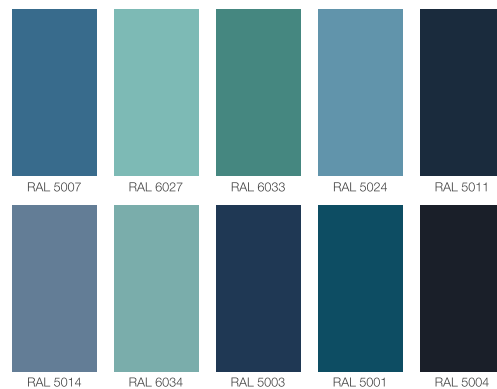
Napoli - RAL 170 30 20 'Thistle Green' Gloss

Napoli 57 - RAL 250 20 25 'Dark Denim Blue' Gloss, RAL 020 30 40 'Amaranth Blossom' Gloss



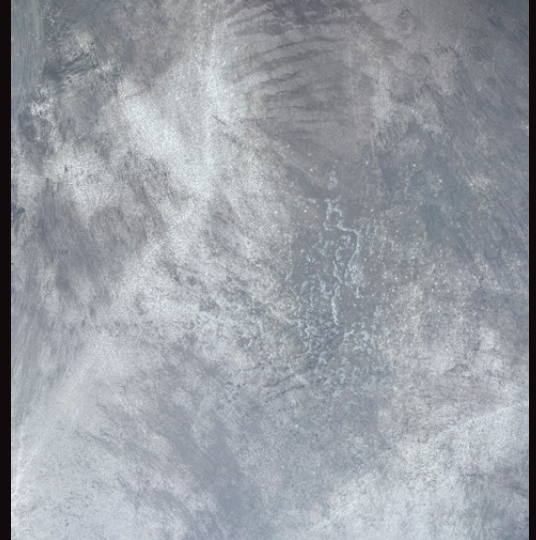


ios 54 – RAL 5007 'Brilliant Blue' Matte



Amiata – RAL 5003 'Sapphire Blue' Matte





## Special Finishes

Special effects such as crazing, metallic, pearl, glitter fleck, aging and rust replication, concrete and natural texture finishes can be applied to any Victoria + Albert bath or basin exterior.

For a one-of-a-kind showpiece, we can also paint custom finishes from reference artwork. For any requests, please contact our office on 07 3265 7133 for advice and a quote on your design.



victoria © albert



### **Australian Distribution Partner**

Luxe by Design  
30 French Avenue,  
Brendale, QLD 4500

Tel: 07 3265 7133  
Email: [sales@luxebydesign.com.au](mailto:sales@luxebydesign.com.au)

### **Victoria + Albert (Australia) Pty Ltd**

PO Box 405  
Morisset, NSW 2264  
Australia

Tel: 1300 737 779  
Email: [sales@vandabaths.com.au](mailto:sales@vandabaths.com.au)

**[www.vandabaths.com](http://www.vandabaths.com)**



@victoria\_albert\_baths



@Vanda\_Baths



Victoria+Albert Baths