



**SHAW'S**  
*by* PERRIN & ROWE®

## Kitchen Tap Collection

A DISTINCTIVE MEMBER OF THE HOUSE OF ROHL



# SHAWS

by PERRIN & ROWE®

*The fusion of function and beauty; durability and desirability, the Shaws Brassware Collection is specifically made in partnership with luxury tap manufacturer Perrin & Rowe®, a company renowned for their unrivalled quality and an exacting attention to detail.*

*Handcrafted in England, from the finest raw materials, these highly desirable taps are available in distinctive designs and a range of special finishes, each featuring bespoke ceramic indices bearing the Shaws seal of approval.*





## Pendleton

Versatile and timeless, the Pendleton is a classic design that works well in both modern and traditional settings. A large deck-mounted bridge mixer with a sweeping swan neck and porcelain lever handles, perfect for larger and double bowl sinks. Available in 2 models, with or without separate pull out spray rinse.

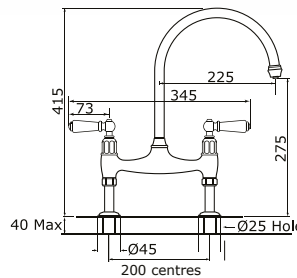
### PENDLETON STANDARD

●	AUSH.4193CPWPC/H1	Chrome
●	AUSH.4193NIWPC/H1	Nickel
●	AUSH.4193PFWPC/H1	Pewter
●	AUSH.4193EBWPC/H1	English Bronze
●	AUSH.4193SBWPC/H1	Satin Brass
●	AUSH.4193BRWPC/H1	Polished Brass
●	AUSH.4193IGWPC/H1	Gold - <i>special order</i>

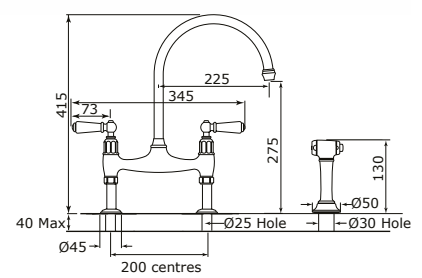


### PENDLETON WITH SPRAY RINSE

●	AUSH.4173CPWPC	Chrome
●	AUSH.4173NIWPC	Nickel
●	AUSH.4173PFWPC	Pewter
●	AUSH.4173EBWPC	English Bronze
●	AUSH.4173SBWPC	Satin Brass
●	AUSH.4173BRWPC	Polished Brass
●	AUSH.4173IGWPC	Gold - <i>special order</i>



Pendleton Standard



Pendleton with Spray Rinse

**Dimensions:** 415mm (H), 225mm tap projection

**Warranty:** 15 Year Warranty. Individual finish warranties apply

**Features include:**

White porcelain lever handles with Shaws insignia on indices

Handmade in the United Kingdom using DZR brass

1/4 turn German-made ceramic disc valves

Vernier insert for accurate handle alignment

Unique handle construction with integral bearing ring

360° rotating spout

**Spray Rinse Model:**

Separate bench-mounted spray rinse tap with 1.2m flexible hose

Supplied with dual check valve

The spray rinse attachment requires a minimum inlet water pressure of 100kPa and a maximum inlet pressure of 500kPa in accordance with the Plumbing Code of Australia.

Please note, the spray rinse is an integral part of the tap assembly and cannot be added later to the standard mixer.

**Shown Above:** Pendleton with Rinse - Nickel (AUSH.4173NIWPC)

**Shown Left:** Pendleton - Chrome (AUSH.4193CPWPC/H1)





## Hambleton

The Hambleton is a beautifully detailed classic French-style bridge mixer with porcelain handles and an up-swept spout. This charming classic tap instantly adds character and luxury to any home, as is a perfect companion for both single and double bowl fireclay sinks. Available in 2 models, with or without separate pull out spray rinse.

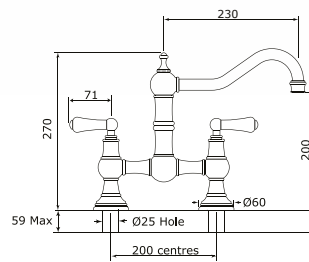
### HAMBLETON STANDARD

	AUSH.4751CPWPC	Chrome
	AUSH.4751NIWPC	Nickel
	AUSH.4751PFWPC	Pewter
	AUSH.4751EBWPC	English Bronze
	AUSH.4751SBWPC	Satin Brass
	AUSH.4751BRWPC	Polished Brass
	AUSH.4751IGWPC	Gold - <i>special order</i>

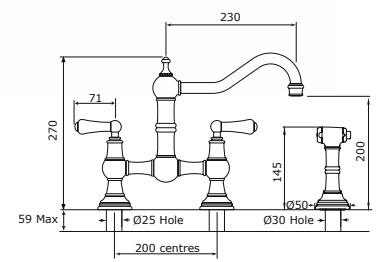


### HAMBLETON WITH SPRAY RINSE

	AUSH.4756CPWPC	Chrome
	AUSH.4756NIWPC	Nickel
	AUSH.4756PFWPC	Pewter
	AUSH.4756EBWPC	English Bronze
	AUSH.4756SBWPC	Satin Brass
	AUSH.4756BRWPC	Polished Brass
	AUSH.4756IGWPC	Gold - <i>special order</i>



Hambleton Standard



Hambleton with Spray Rinse

**Dimensions:** 270mm (H), 230mm tap projection

**Warranty:** 15 Year Warranty. Individual finish warranties apply

**Features include:**

White porcelain lever handles with Shaws insignia on indices

Handmade in the United Kingdom using DZR brass

1/4 turn German-made ceramic disc valves

Vernier insert for accurate handle alignment

Unique handle construction with integral bearing ring

360° rotating spout

**Spray Rinse Model:**

Separate bench-mounted spray rinse tap with 1.2m flexible hose

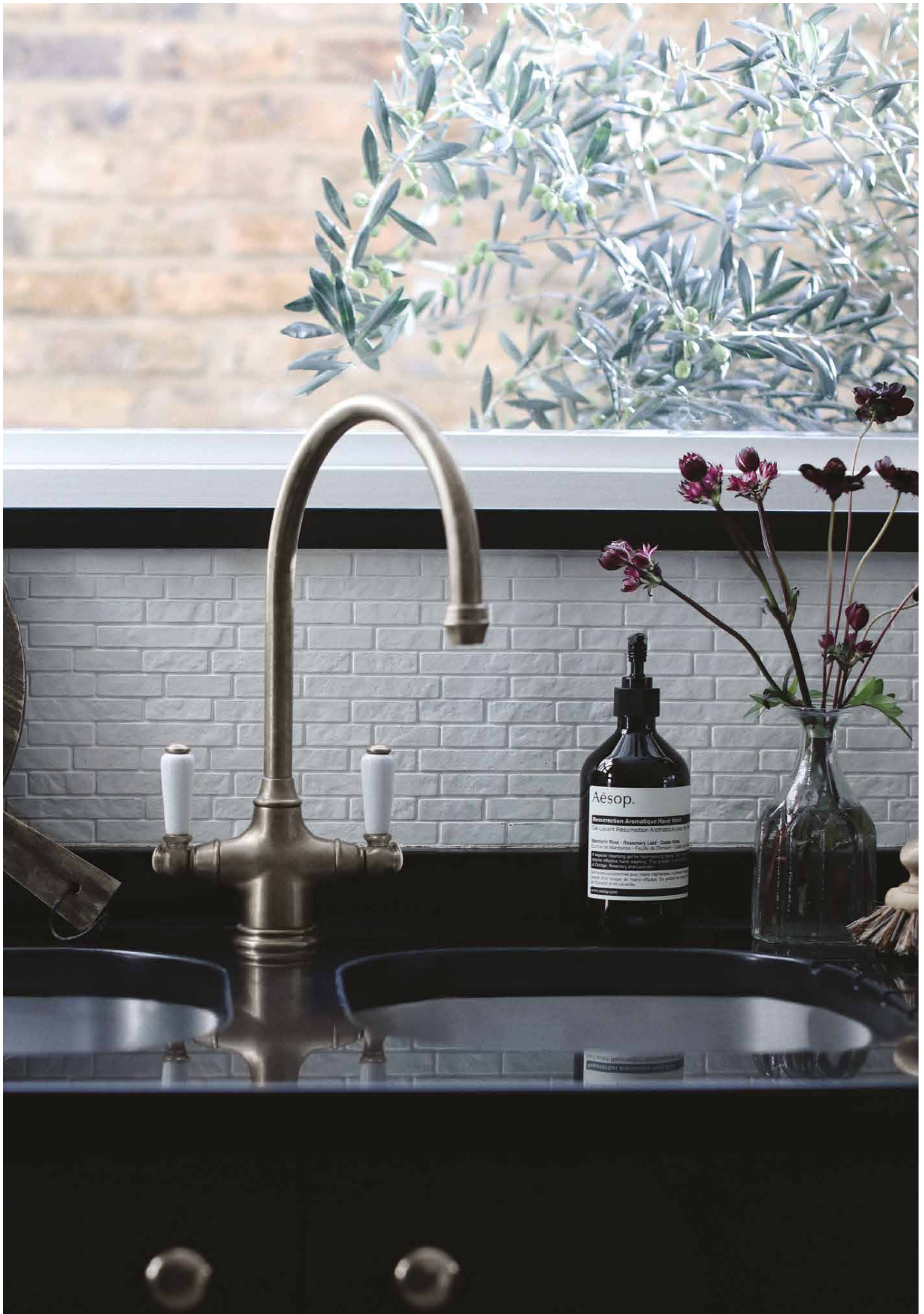
Supplied with dual check valve

The spray rinse attachment requires a minimum inlet water pressure of 100kPa and a maximum inlet pressure of 500kPa in accordance with the Plumbing Code of Australia.

Please note, the spray rinse is an integral part of the tap assembly and cannot be added later to the standard mixer.

**Shown Above:** Hambleton with Rinse - Polished Brass (AUSH.4756BRWPC)

**Shown Left:** Hambleton with Rinse - Pewter (AUSH.4756PFWPC)



Aesop.  
Resurrection Aromatique Hand Wash  
Gel Lavant Resurrection Aromatique pour les mains  
Santal de Indonésie • Rosemary Leaf • Cedar Wood  
Fragrance cleaning gel for hands with essential oils of  
Santal de Indonésie, Feuilles de Rosemary, Feuilles de  
Cèdre, Rosemary and Cedars.  
Handwashing with soap and water is the most effective way to  
prevent the spread of germs.  
www.aesop.com



# KITCHEN TAP COLLECTION

## Ribble

The Ribble is practical, beautiful and timeless tap suitable for a wide range of design styles. Its Monobloc design with symmetrical dual porcelain handles makes for an elegant yet functional tap for single or double bowl sinks. Available in 2 models, with or without separate pull out spray rinse.

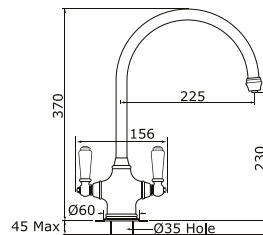
### RIBBLE STANDARD

	AUSH.4460CPWPC	Chrome
	AUSH.4460NIWPC	Nickel
	AUSH.4460PFWPC	Pewter
	AUSH.4460EBWPC	English Bronze
	AUSH.4460SBWPC	Satin Brass
	AUSH.4460BRWPC	Polished Brass
	AUSH.4460IGWPC	Gold - <i>special order</i>

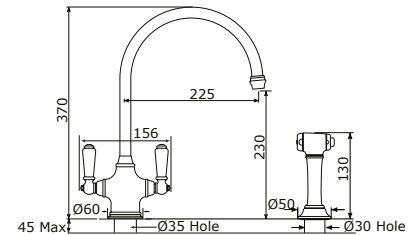


### RIBBLE WITH SPRAY RINSE

	AUSH.4360CPWPC	Chrome
	AUSH.4360NIWPC	Nickel
	AUSH.4360PFWPC	Pewter
	AUSH.4360EBWPC	English Bronze
	AUSH.4360SBWPC	Satin Brass
	AUSH.4360BRWPC	Polished Brass
	AUSH.4360IGWPC	Gold - <i>special order</i>



Ribble Standard



Ribble with Spray Rinse

**Dimensions:** 370mm (H), 225mm tap projection

**Warranty:** 15 Year Warranty. Individual finish warranties apply

#### Features include:

White porcelain lever handles with Shaws insignia on indices

Handmade in the United Kingdom using DZR brass

1/4 turn German-made ceramic disc valves

Vernier insert for accurate handle alignment

Unique handle construction with integral bearing ring

Flexible connectors for easier installation

360° rotating spout

#### Spray Rinse Model:

Separate bench-mounted spray rinse tap with 1.2m flexible hose

Supplied with dual check valve

The spray rinse attachment requires a minimum inlet water pressure of 100kPa and a maximum inlet pressure of 500kPa in accordance with the Plumbing Code of Australia.

Please note, the spray rinse is an integral part of the tap assembly and cannot be added later to the standard mixer.

**Shown Above:** Ribble with Rinse - Pewter (AUSH.4360PFWPC)

**Shown Left:** Ribble - Pewter (AUSH.4460PFWPC)











# KITCHEN TAP COLLECTION

**SHAWS**  
by PERRIN & ROWE

## Yarrow

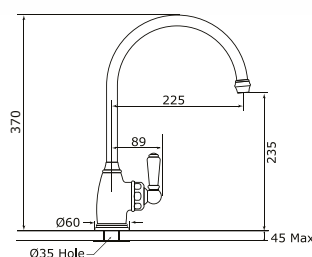
The Yarrow is a classic tap that features subtle traditional detailing and practical design. Mixing water temperatures is made simple by a single porcelain lever. The large swan neck spout and refined ribbed details makes it an elegant addition for kitchens, bars and laundries. Available in 2 models, with or without separate pull out spray rinse.

### YARROW STANDARD

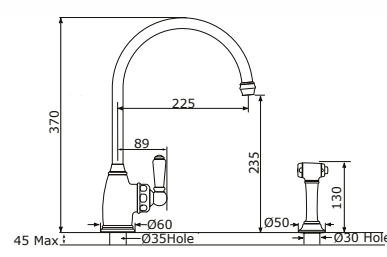
●	AUSH.4341CPWPC	Chrome
●	AUSH.4341NIWPC	Nickel
●	AUSH.4341PFWPC	Pewter
●	AUSH.4341EBWPC	English Bronze
●	AUSH.4341SBWPC	Satin Brass
●	AUSH.4341BRWPC	Polished Brass
●	AUSH.4341IGWPC	Gold - <i>special order</i>

### YARROW WITH SPRAY RINSE

●	AUSH.4346CPWPC	Chrome
●	AUSH.4346NIWPC	Nickel
●	AUSH.4346PFWPC	Pewter
●	AUSH.4346EBWPC	English Bronze
●	AUSH.4346SBWPC	Satin Brass
●	AUSH.4346BRWPC	Polished Brass
●	AUSH.4346IGWPC	Gold - <i>special order</i>



Yarrow Standard



Yarrow with Spray Rinse

**Dimensions:** 370mm (H), 225mm tap projection

**Warranty:** 15 Year Warranty. Individual finish warranties apply

#### Features include:

White porcelain lever handle with Shaws insignia on indice

Handmade in the United Kingdom using DZR brass

Kerox 40mm ceramic cartridge

Vernier insert for accurate handle alignment

Unique handle construction with integral bearing ring

Flexible connectors for easier installation

360° rotating spout

#### Spray Rinse Model:

Separate bench-mounted spray rinse tap with 1.2m flexible hose

Supplied with dual check valve

The spray rinse attachment requires a minimum inlet water pressure of 100kPa and a maximum inlet pressure of 500kPa in accordance with the Plumbing Code of Australia.

Please note, the spray rinse is an integral part of the tap assembly and cannot be added later to the standard mixer.

**Shown Above:** Yarrow with Rinse - Nickel (AUSH.4346NIWPC)






**Shown Left:** Yarrow - Chrome (AUSH.4341CPWPC)



## Silverdale

The sleek, elegant design of the Silverdale dual lever monobloc mixer lends itself perfectly to modern and transitional kitchens with a clean minimalist approach. The symmetrical shape and sweeping swan neck offer a classic silhouette that will withstand the test of time. Available in 2 models, with or without separate pull out spray rinse.

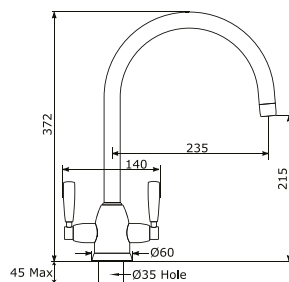
### SILVERDALE STANDARD

	AUSH.4861CP	Chrome
	AUSH.4861NI	Nickel
	AUSH.4861PF	Pewter
	AUSH.4861EB	English Bronze
	AUSH.4861SB	Satin Brass
	AUSH.4861BR	Polished Brass
	AUSH.4861IG	Gold - <i>special order</i>

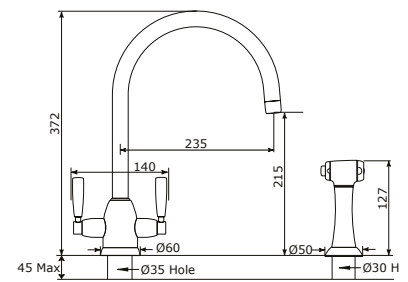


### SILVERDALE WITH SPRAY RINSE

	AUSH.4866CP	Chrome
	AUSH.4866NI	Nickel
	AUSH.4866PF	Pewter
	AUSH.4866EB	English Bronze
	AUSH.4866SB	Satin Brass
	AUSH.4866BR	Polished Brass
	AUSH.4866IG	Gold - <i>special order</i>



Silverdale Standard



Silverdale with Spray Rinse

**Dimensions:** 372mm (H), 235mm tap projection

**Warranty:** 15 Year Warranty. Individual finish warranties apply

**Features include:**

Metal lever handles with 'H' and 'C' temperature engravings

Handmade in the United Kingdom using DZR brass

1/4 turn German-made ceramic disc valves

Vernier insert for accurate handle alignment

Unique handle construction with integral bearing ring

Flexible connectors for easier installation

360° rotating spout

**Spray Rinse Model:**

Separate bench-mounted spray rinse tap with 1.2m flexible hose

Supplied with dual check valve

The spray rinse attachment requires a minimum inlet water pressure of 100kPa and a maximum inlet pressure of 500kPa in accordance with the Plumbing Code of Australia.

Please note, the spray rinse is an integral part of the tap assembly and cannot be added later to the standard mixer.

**Shown Above:** Silverdale with Rinse - English Bronze (AUSH.4866EB)

**Shown Left:** Silverdale with Rinse - Chrome (AUSH.4866CP)





# KITCHEN TAP COLLECTION

**SHAWS**  
by PERRIN & ROWE

## Roeburn

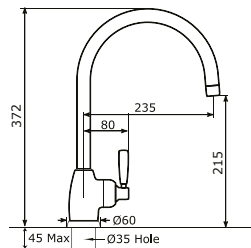
The Roeburn is a single-lever contemporary tap with a smooth asymmetrical modern profile. Its minimal monobloc design is a popular choice for transitional and modern kitchens with large or double bowl sinks. Available in 2 models, with or without separate pull out spray rinse.

### ROEBURN STANDARD

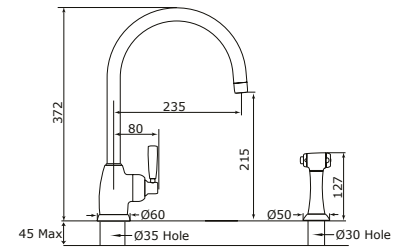
●	AUSH.4841CP	Chrome
●	AUSH.4841NI	Nickel
●	AUSH.4841PF	Pewter
●	AUSH.4841EB	English Bronze
●	AUSH.4841SB	Satin Brass
●	AUSH.4841BR	Polished Brass
●	AUSH.4841IG	Gold - <i>special order</i>

### ROEBURN WITH SPRAY RINSE

●	AUSH.4846CP	Chrome
●	AUSH.4846NI	Nickel
●	AUSH.4846PF	Pewter
●	AUSH.4846EB	English Bronze
●	AUSH.4846SB	Satin Brass
●	AUSH.4846BR	Polished Brass
●	AUSH.4846IG	Gold - <i>special order</i>



Roeburn Standard



Roeburn with Spray Rinse

**Dimensions:** 372mm (H), 235mm tap projection

**Warranty:** 15 Year Warranty. Individual finish warranties apply

#### Features include:

Metal lever handle with 'H' and 'C' temperature engravings

Handmade in the United Kingdom using DZR brass

Kerox 40mm ceramic cartridge

Unique handle construction with integral bearing ring

Flexible connectors for easier installation

360° rotating spout

#### Spray Rinse Model:

Separate bench-mounted spray rinse tap with 1.2m flexible hose

Supplied with dual check valve

The spray rinse attachment requires a minimum inlet water pressure of 100kPa and a maximum inlet pressure of 500kPa in accordance with the Plumbing Code of Australia.

Please note, the spray rinse is an integral part of the tap assembly and cannot be added later to the standard mixer.

**Shown Above:** Roeburn with Rinse - Satin Brass (AUSH.4846SB)

**Shown Left:** Roeburn - Chrome (AUSH.4841CP)



## Pot Filler

The ultimate convenience for home cooks, our wall mounted pot filler with extendable arm easily fills pots and pans with minimal fuss. Ideally located above your cooktop, the pot filler simply folds away when not in use, and adds an elegant and functional detail to classic kitchens.

### WALL MOUNTED POT FILLER

●	AUSH.4417CP	Chrome
●	AUSH.4417NI	Nickel
●	AUSH.4417PF	Pewter
●	AUSH.4417EB	English Bronze
●	AUSH.4417SB	Satin Brass
●	AUSH.4417BR	Polished Brass
●	AUSH.4417IG	Gold - <i>special order</i>

**Extendable Arm:** Arm 1: 195mm. Arm 2: 335mm.  
Full Extended Reach: 590mm

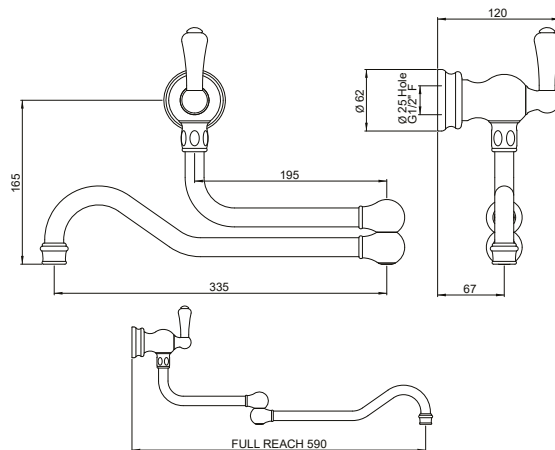
**Warranty:** 15 Year Warranty. Individual finish warranties apply

#### Features include:

- Extendable pot filler with articulating arm
- Ideally wall mounted above cooktop
- Supplied with concealed wall mounting plate, wall plugs and screws
- Single white porcelain lever handle
- Handmade in the United Kingdom using DZR brass
- 1/4 turn German-made ceramic disc valves
- Unique handle construction with integral bearing ring








**Shown Above:** Pot Filler - Chrome (AUSH.4417CP)

**Shown Left:** Pot Filler - Satin Brass (AUSH.4417SB)



## Finishes

Our tapware is available in seven beautiful finishes, each with their own unique properties and care instructions. Read below to explore the Perrin & Rowe® finishes and find the right fit for you.

	CP	<b>Chrome</b> A brilliant, shiny silver tone that tends to the cooler side of the colour spectrum. This stable, electroplated finish does not tarnish and is a popular choice for a classic or contemporary look with minimal maintenance.
	NI	<b>Nickel</b> A richer tone than chrome, this warm, shiny finish is extremely popular for classical interiors with its champagne colouring. It can complement warm interiors or balance cool-toned colour schemes. This electroplated finish is slightly more delicate than chrome, but is simple to clean and maintain. Nickel can develop a subtle aged effect over time, which may be restored to its original lustre with gentle cleaning.
	PF	<b>Pewter</b> This brushed satin-nickel finish has warm undertones and is an excellent match for stainless steel sinks, fixtures and appliances. Pewter can respond to the environment over time to develop a slightly deeper tone and a soft natural patina which can be restored periodically with gentle cleaning.
	EB	<b>English Bronze</b> A rich chocolate-bronze with slight gold undertones and a smooth matt finish. The baked resin finish over a brass body offers a unique and distinctive bronze tone that works equally well on modern and classic fixtures.
	SB	<b>Satin Brass - living finish</b> An uncoated bare brass without any lacquer or clear coatings. The rich warm tones are identical to Polished Brass, except the surface has a soft brushed satin appearance. As a living finish, Satin Brass matures to develop a highly-sought after unique patina that adds history, character and interest in both modern and traditional designs.
	BR	<b>Polished Brass - living finish</b> This uncoated bare brass is identical to Satin Brass, but has been hand-polished for a high shine. As a living finish, this raw and unlacquered brass will patina with time and environmental changes to develop a beautiful and natural aged appearance.
	IG	<b>Gold - special order</b> An electroplated finish using real 24 carat gold for a warm, glowing tone. This luxurious, soft finish requires gentle use and should be treated like a fine piece of jewellery. An excellent choice for refined, classic design styles. <i>Due to the delicate nature of Gold finish products, they are available by special order only and have a longer lead time than the other finishes. Contact our office for more details.</i>

## 'Living' Finishes

Initially, Living Finish products will start their life with minimal marks and variance. With time and regular use, the unique characteristics of each finish will develop - with each fitting bearing its own distinctive appearance.

### WHAT TO EXPECT

Polished and Satin Brass finishes enjoy a rich, layered patina with natural buffing marks and variance from continued use. These marks are a treasured design feature of raw brass fittings and are typically chosen to instill a sense of history and permanence.

These finishes will develop their own individual appearance over time from general handling and use. Overspray from everyday household cleaners and acidic foods commonly contribute to the speed of the ageing process of living finishes. This can be slowed by following a regular cleaning routine, or you can embrace the natural reaction by relaxing your cleaning routine and watch the magic unfold.

### LIVING FINISH MAINTENANCE

Satin Brass has a brushed finish which makes it more susceptible to marks and staining. To correct uneven staining, it can be gently restored when dry using a light abrasive cloth such as a green Scotch-Brite pad, or a 320 grit sanding sponge if requiring more abrasion. Carefully clean the tap following the direction of the grain to restore the brushed effect. Using a metal polish can assist with removing built-up stains, but will reduce the brushed effect.

Polished Brass will garner a patina and lose some of its brightness over time. Cleaning the fixture with soap and water will not affect the patina development. To restore the original shine, use a gentle abrasive cleaner like Brasso or Autosol metal polish on a microfibre cloth.





Chrome



Nickel



English Bronze



Gold



Pewter | Before



Pewter | After



Polished Brass | Before



Polished Brass | After



Satin Brass | Before



Satin Brass | After

## Cleaning and Care

Shaws by Perrin & Rowe taps and accessories are made in Britain from premium quality brass. Each piece is hand-polished and electroplated in a range of finishes. While our finishes exceed industry standards for thickness and quality, it is important they receive appropriate care for your selected finish.

Following a simple cleaning routine after use will maintain the beauty of your brassware, and preserve the warranty. Ideally, fittings should be dried with a soft cloth after each use. Clean regularly by dampening a microfibre cloth with warm water combined with a mild PH-neutral liquid soap, then polish with a soft, lint-free cloth to finish. Microfibre cloths are ideal as they are gentle but effective at cleaning brassware without scratching. This approach is suitable for all finishes, except for Gold which should be cleaned with a leather chamois cloth.

### GENERAL TIPS FOR ALL FINISHES

- Dry fittings after use with a soft cloth.
- Residue left from soap or cleaning gels can cause blemishes on your brassware. Completely rinse off all fittings with clean water and dry after use.
- Using a soft microfibre cloth, gently clean the fixture regularly with warm water and a non-abrasive PH-neutral liquid soap, then dry with a microfibre cloth. The only exception is the Gold finish that requires a chamois leather cloth.
- To remove limescale, use a 50/50 solution of lemon juice and water. Soak cotton wool in the solution and leave wrapped around the tap for no longer than 1 hour, then rinse clean with water and fully dry with a lint-free cloth. For heavy scaling, the process can be repeated provided the area is rinsed with clean water between treatments to avoid a build-up of citric acid.

### AVOIDING DAMAGE

- Under no circumstances should harsh cleaning agents containing acidic, caustic or abrasive components such as bleach, alcohol or vinegar-based substances be used.
- Avoid getting household bleach or cleaners on to your fittings when using on surrounding surfaces. Any splashes should be immediately rinsed with clean water and dried - do not allow residue to remain on the metal finishes. To avoid this happening, cover the fixture with a cloth or towel when cleaning around the tapware.
- Do not use abrasive cloths, scouring pads, scrub sponges, steel wool etc. as they may damage the finish.
- To avoid dye and patterning transfer from wet cloths, avoid hanging them over the spout of the tap. Porous surfaces such as nickel, pewter and unlacquered brass finishes may be affected by chemicals in or on the cloth.

## Certifications

### WATERMARK

Perrin & Rowe manufactures kitchen taps especially for the Australian market using DZR (dezincification resistant) brass of the highest quality, with fittings which are compatible with Australian plumbing standards. WaterMark certification (license number WMKA02818) has been awarded to the Perrin & Rowe tapware which is made for Australia. Perrin & Rowe tapware sold elsewhere in the world is not certified for Australia, contains different brass and plumbing fittings and cannot be legally installed.

### WELS RATING

Perrin & Rowe kitchen tapware has been tested and certified with WELS under the Water Efficiency Labelling & Standards (WELS) scheme with License number 1938.

Shaws by Perrin & Rowe Kitchen Taps have been awarded a WELS 7.5L/min Four Star rating

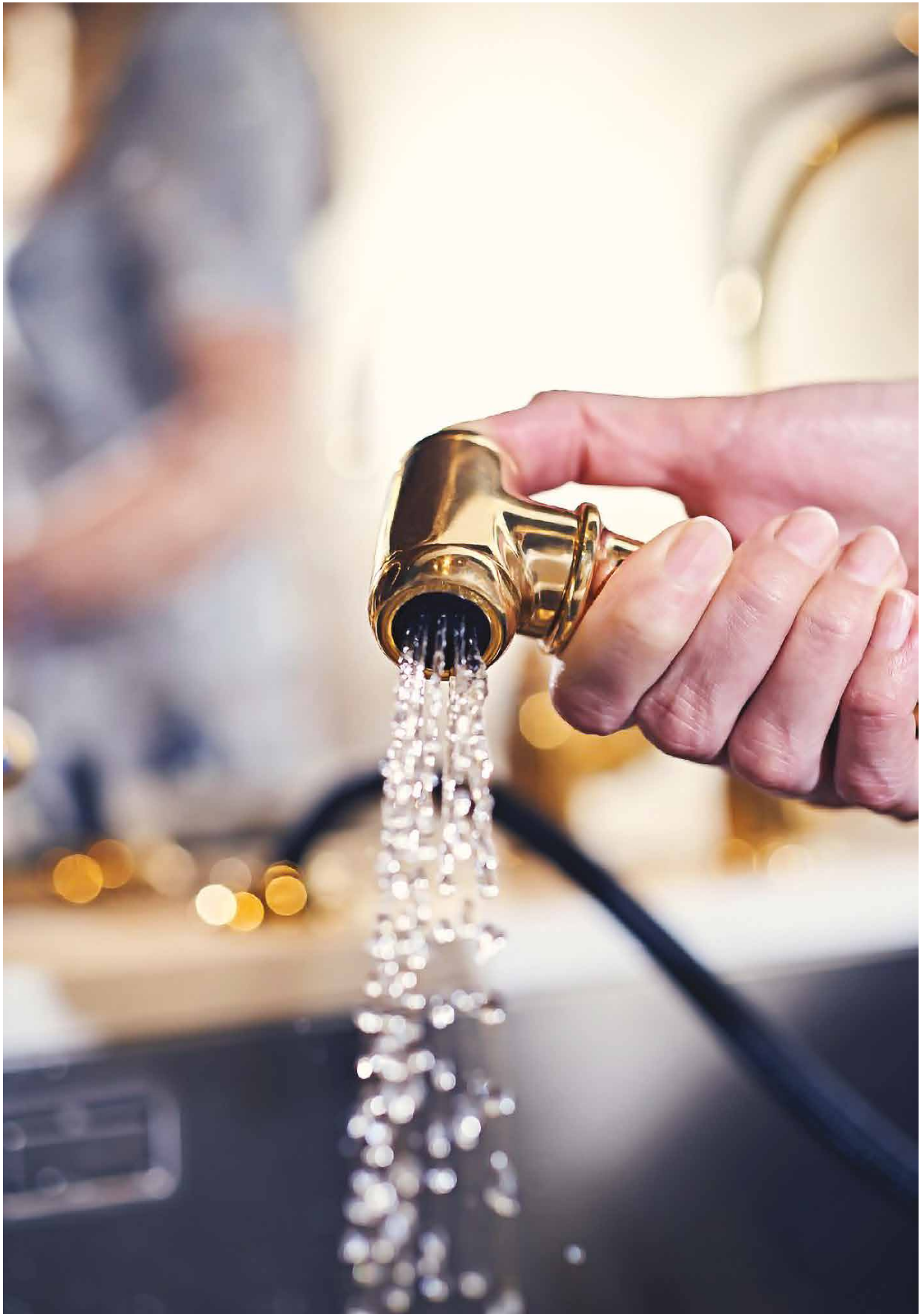
Shaws by Perrin & Rowe Spray Rinse Taps have been awarded a WELS 4L/min Six Star rating for the spray tap, and WELS 7L/min Five Star rating for the mixer tap



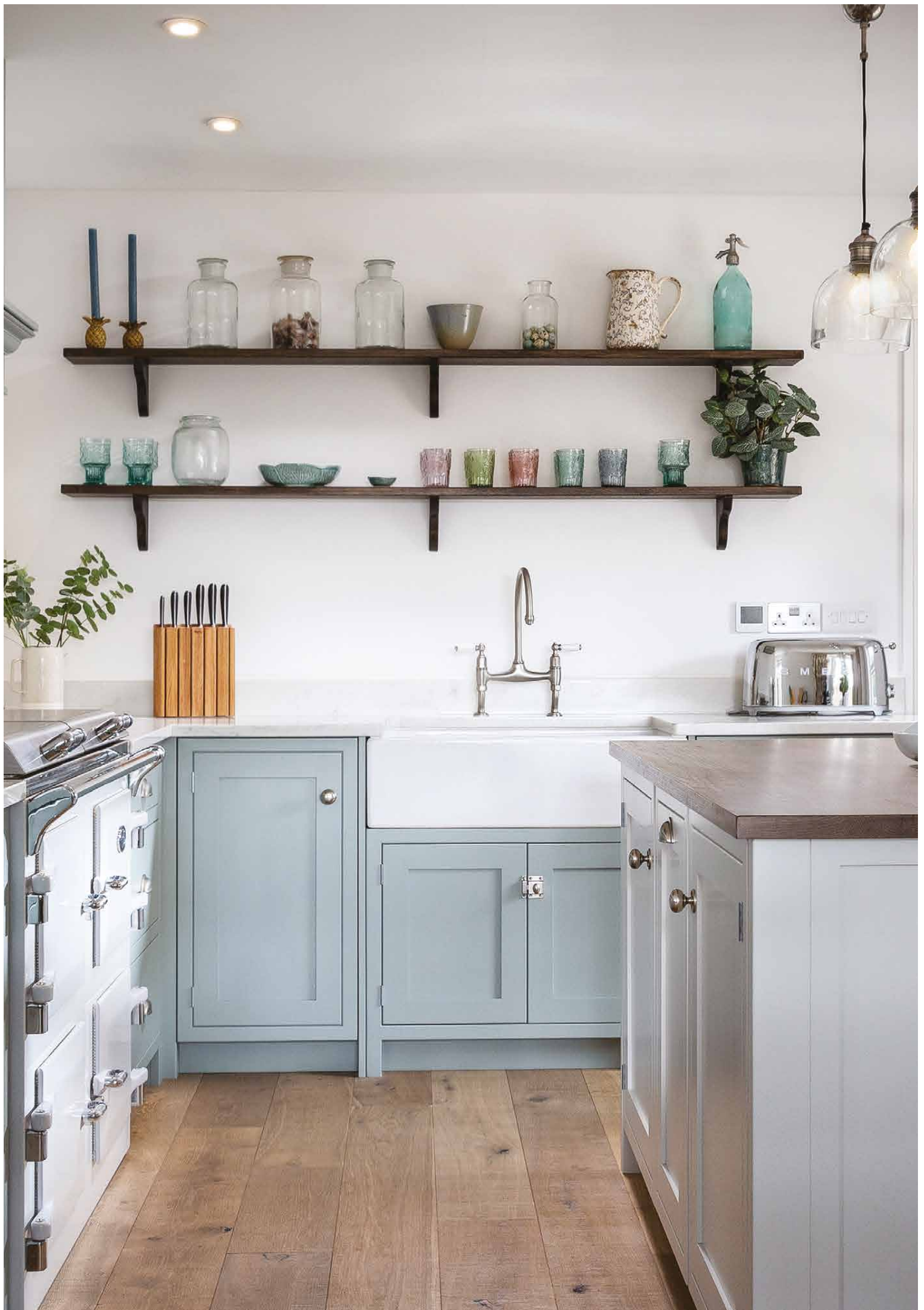
## Spray Rinse

Clean fresh fruit, vegetables and dirty crockery sink-side without wasting water. All Shaws by Perrin & Rowe® taps have the option of an additional matching stand-alone spray rinse, which can be deck mounted to the left or right hand side of the tap. Simply run the desired water temperature through the main tap, then press the trigger on the back side of the spray rinser to divert the water flow. A flexible and durable 1.2m hose offers generous reach around the sink for quick and easy clean up. Please note, the spray rinse is an integral component of the tap assembly and cannot be added later to a standard kitchen mixer.

**IMPORTANT:** All spray rinse kitchen taps require a minimum inlet water pressure of 100kPa and a maximum of 500kPa to successfully divert the flow of water to the spray rinse nozzle. Chrome stop cocks with gauze filters are supplied with each spray rinse model and are an essential part of the installation. Please advise your licensed plumber that failure to install the stop cocks will void the taps warranty.







# Our Warranty

At Shaws our promise to you is to provide the best sinks and taps in the world, backed up with outstanding personal customer service.

That's why all our products are not only of exceptional quality, but carry comprehensive warranties to give you total peace-of-mind.



Engineered to a level that exceeds industry standards, Shaws by Perrin & Rowe® taps are forged in the UK using the highest quality raw materials. Assembled by hand, they are the ideal accompaniment to our handcrafted sinks.

All Shaws by Perrin & Rowe taps carry a  
**15 Year Warranty**  
for Residential use

Taps carry a 15 Year Guarantee - 5 Year parts and labour, and an additional 10 years for parts only  
Tapware finishes carry individual warranties. Please visit our website for  
warranty details relating to your chosen finish for full details.

[luxebymdesign.com.au/shaws-perrin-rowe-warranty](https://luxebymdesign.com.au/shaws-perrin-rowe-warranty)

The very best quality and attention to detail.  
**Handmade in England.**







HOUSE OF ROHL

## THE STORY CRAFT TELLS

Shaws and Perrin & Rowe are members of the House of Rohl, a collection of artisan brands recognised for their artistry and heritage.

The Rohl family have spent a lifetime seeking stories of dedication, passion and craft. They have brought together diverse brands, exceptional in their category, that complement each other. Independent spirits, but shared values. A belief that quality starts with the material, design is in the detail and craftsmanship is paramount.

Distinctive stories are what makes life exceptional. At the House of Rohl, we discover time-honoured craft, revealing stories unlike any other. Stories of place and provenance. Stories of ingenuity and invention. Stories of a relentless pursuit of perfection.

Welcome to the House of Rohl®

PERRIN & ROWE  
SHAWS | VICTORIA + ALBERT

Explore the collection at [houseofrohl.uk](https://houseofrohl.uk)

victoria ⊕ albert<sup>®</sup>



**SHAWS**  
*by* PERRIN & ROWE<sup>®</sup>

A DISTINCTIVE MEMBER OF THE HOUSE OF ROHL

**LUXE *by* DESIGN**

Imported and Distributed in Australia by Luxe by Design. 30 French Avenue, Brendale QLD 4500

07 3265 7133 | SALES@LUXEBYDESIGN.COM.AU | LUXEBYDESIGN.COM.AU